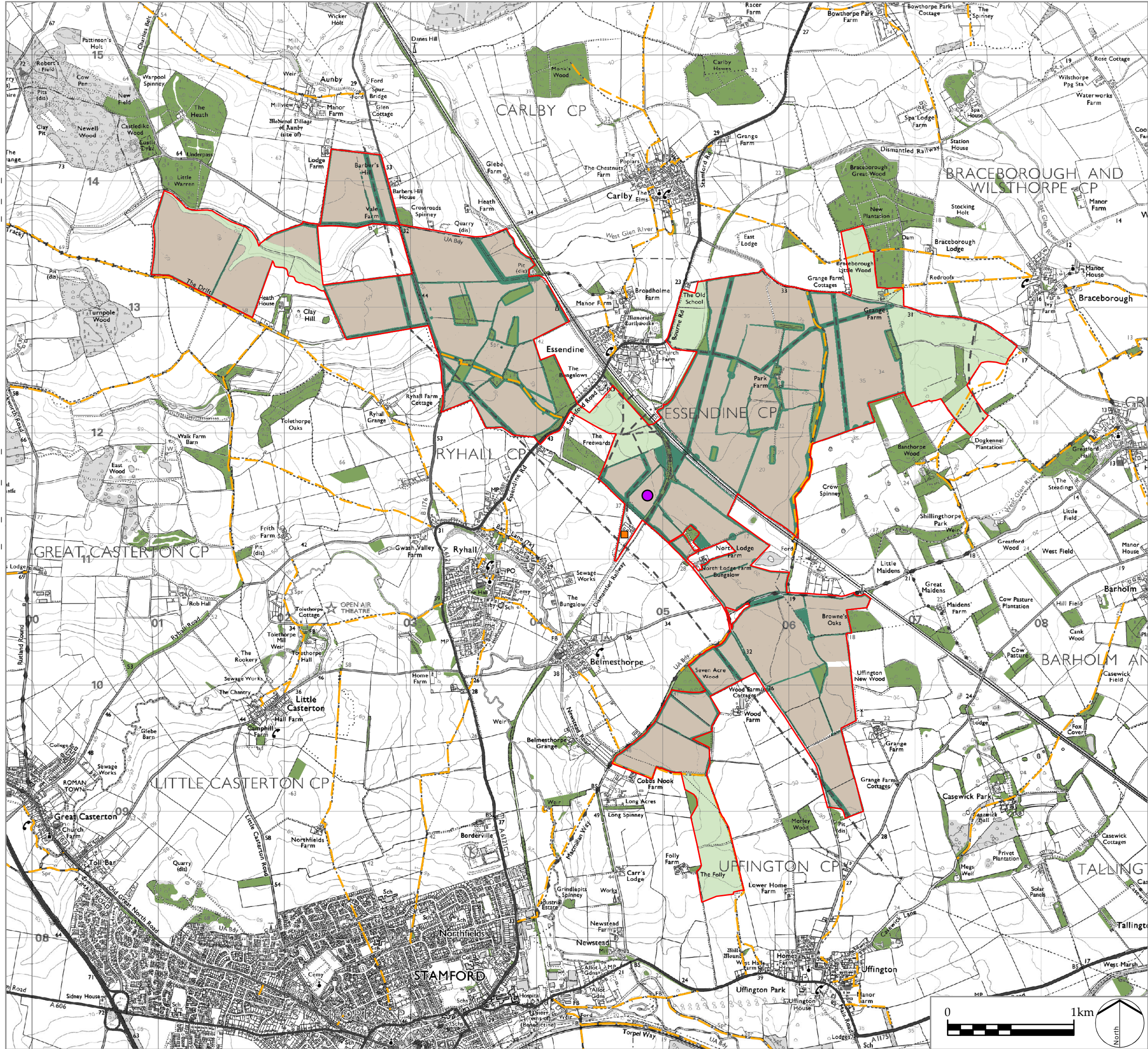


Z:\7863_NSIP_SOLAR_FARM_CONFIDENTIAL\8GIS\PROJECTS\FIGURES\7863_SK_605_STAGE_1_CONCEPT_MASTERPLAN.MXD



Infrastructure Planning (Applications:
Prescribed Forms and Procedure) Regulations 2009
APFP Regulation: 5(2)(a)

PINS REFERENCE NUMBER
EN010127

LEGEND

Site Features

- Order limits
- Existing Utilities (gas, water, sewer and electricity)
- National Grid Ryhall Substation
- Public Right of Way
- Woodland, hedgerows, trees, field boundaries and ditches

Concept Masterplan Proposals

- Solar PV Site
- Potential Mitigation and Enhancement Areas
- Offsets to woodland, trees, hedgerows, ditches, utilities and Public Rights of Way
- Onsite Substation

P0 DCO Submission
REV. DESCRIPTION

RP 06/11/22
APP. DATE



PROJECT TITLE

MALLARD PASS SOLAR FARM

DRAWING TITLE

Figure 4.1: Stage 1 Concept Masterplan

ISSUED BY Oxford T: 01865 887050
DATE Nov 2022 DRAWN AG
SCALE @A3 1:30,000 CHECKED PD
STATUS Final APPROVED RP

DWG. NO. 7863_SK_605 REV: P0

No dimensions are to be scaled from this drawing.
All dimensions are to be checked on site.
Area measurements for indicative purposes only.

© LDA Design Consulting Ltd. Quality Assured to BS EN ISO 9001 : 2015

Sources: Ordnance Survey